

Zipper Pouch Tutorial

By Janel Metsker



Supplies, equipment, prepare, and cut

Supplies and Equipment

- ◆ 12" nylon zipper
- ◆ ¼ yard or a fat quarter of a medium weight cotton woven fabric
- ◆ Coordinating all-purpose thread
- ◆ Wonder clips
- ◆ Fabric scissors and/or rotary cutter with cutting mat
- ◆ Clear acrylic ruler
- ◆ Marking tool
- ◆ Iron/ironing board
- ◆ Sewing machine
- ◆ Zipper foot

Prepare and Cut Your Fabric

- ◆ Prewash your fabric if desired
- ◆ Iron your fabric to remove any wrinkles
- ◆ Cut two 8" x 10" rectangles from your fabric. (The 10" side will be the top and bottom edge of the bag if using directional fabric.)



Installing the Zipper

Position zipper and Wonder clip zipper to fabric

- ◆ Place fabric right side up with the 12" zipper pull face down along the 10" side of the rectangle.
- ◆ Use Wonder clips to hold the zipper in place along the 10" edge of the fabric.
- ◆ You will have a couple of inches of zipper extending past the fabric that will be trimmed off later.





Change your sewing machine presser foot to a zipper foot, and move the needle to the left position.

1st side of the zipper

- ◆ With your needle between the zipper foot and the zipper teeth, stitch along the length of the zipper removing the clips as you go.
- ◆ Unzip the zipper completely so the zipper pull is out of the way while sewing.



Turn right side up and press



Turn your fabric and zipper right side up.

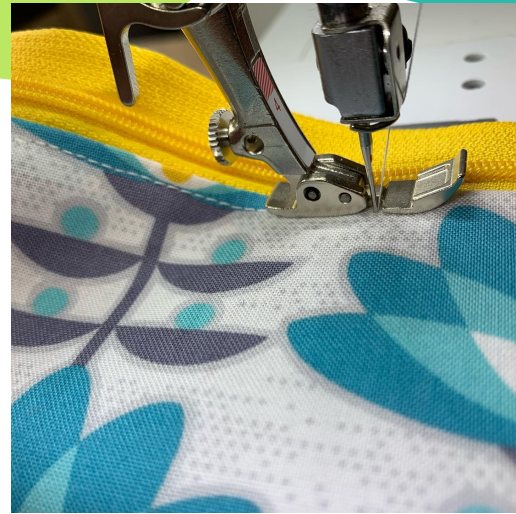


Finger press your fabric and zipper seam flat.

Top stitch



Keep your needle in the left position and your zipper foot along the left edge of your zipper teeth.



Top stitch your fabric so it stays out of the way of your zipper teeth

2nd side of the zipper



Place unsewn 8" x 10" rectangle right side up. Place the zipper pull side down on the previously assembled side.



Match the raw fabric edge to the zipper edge. Wonder clip edges together.

Unzip and sew



Unzip the zipper so the finished side falls out of the way and the zipper pull doesn't create a bump in your sewing line.



Sew with the needle between the zipper foot and the zipper teeth.

Zip and press



Zip up your zipper again.



Finger press the new seam.

Unzip and top stitch



Unzip the zipper.



Top stitch the fabric with the needle to the left and the presser foot to the left of the zipper teeth.

Zipper is installed



- ◆ The fabric is now attached to both sides of the zipper.
- ◆ No raw edges are visible along the front side of the zipper.
- ◆ The top stitching has reinforced the fabric and will keep fabric from getting caught in your zipper as you open and close the bag in the future.

Forming the Zipper Pouch

Fold the right sides together



Fold your project in half with right sides together.



Use Wonder clips to secure the raw edges of your fabric together.

Partially unzip and Wonder clip



Unzip your zipper 5-6 inches.



Continue using wonder clips to hold raw fabric edges together.



Sew $\frac{3}{8}$ " seam allowance



Use a clip to hold folded zipper together when you sew. Do not hit the metal stopper on the zipper with your needle.

Sew forward and back stitch a few times completely over the zipper.

Sew with a $\frac{3}{8}$ " seam allowance.

Corners



- ◆ When you get $\frac{3}{8}$ " from the corner, put your needle in the down position, raise your presser foot, and turn your project 90 degrees.
- ◆ Lower your presser foot, and continue sewing. Repeat at the next corner.



Stitch through zipper and trim threads



- ◆ Stitch forward and back stitch a few times completely through the nylon zipper.
- ◆ Trim all extra threads from your project.



Trim corners



Trim a triangle of fabric from the corners to reduce bulk.

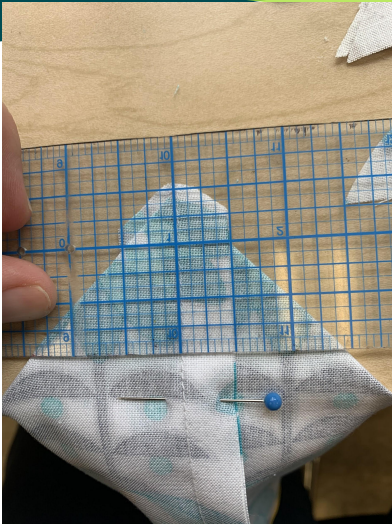
Boxing the Corners

Nesting the seams



- ◆ Open your bag with the wrong sides facing out.
- ◆ Fold the corners into a triangle shape with the seam allowance folded to the right on top and the opposite direction on the other side so the seams are nested and flat.

Mark the sewing line and pin



Line up a ruler
along the stitched
seam line.



Draw a line with a
marking tool of
choice to be 1 ½"
from the point.

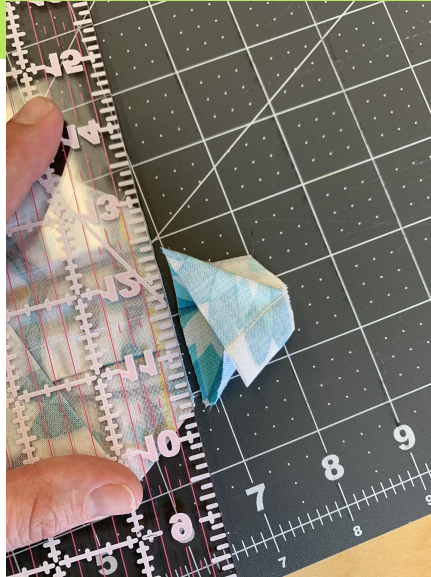


Place 2 pins to
hold the nested
seams.

Sew marked line, trim, and repeat



Stitch along the marked line.



Trim off the triangle $\frac{1}{4}$ " from the stitched line to reduce bulk.



Repeat this process on the other corner.

Cut off extra zipper length

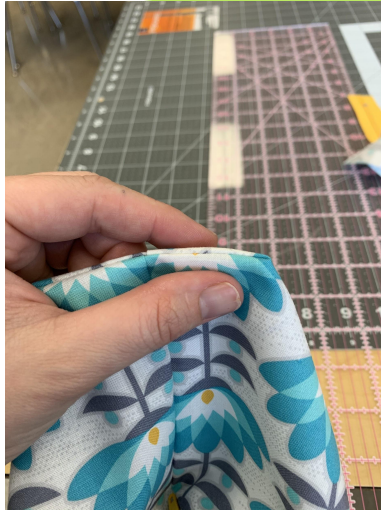


Cut the extra zipper length off to reduce bulk from your finished zipper pouch.

Turning your project right side out



Turn your project right side out.



Roll and massage the seams to reshape your project.



Boxed corners





Thanks!

Any questions?

You can contact me
@niteowlquilting on
Instagram or email
janel@niteowlquilting.com



Credits

- ◆ Presentation template by SlidesCarnival
- ◆ Sewing, writing, and photography by Janel Metsker
- ◆ Visit www.niteowlquilting.com for more quilt patterns and sewing tutorials.

